



Welcome

Welkom

Willkommen

Benvenuto

Bienvenida

Bienvenue

Welcome
guide
for international
students of
Hainaut



pôle
hainuyer

2025-2026
Academic year

Welcome guide for international students of Hainaut

/ Co-ordination and editing
Pôle hainuyer

/ Illustrations
Photographies :
The Pôle hainuyer and
its partner institutions

Illustrations :
Pierre Kroll

/ Published by
Pôle hainuyer asbl
Avenue Frère Orban, 9
7000 Mons

/ Design
Pôle hainuyer ASBL



Sommaire

Word of the editor.....	3
Belgium in brief.....	4
Enseignement	5
/ Higher education in the Wallonia-Brussels Federation	5
/ The Pôle hainuyer, a Higher Education Hub	6
/ Studying at an institution of the Pôle hainuyer	7
/ Education and Sustainable Development	7
/ International Relations departments	8
/ Academic calendar	11
/ French language courses	12
/ Libraries	12
/ Student life	13
/ Culture and Sports units	14
Useful informations.....	17
/ Administrative procedures	17
/ Transport and mobility	19
/ Accommodation	21
/ Health	23
/ Day-to-day life	25
Maps.....	26
/ Hainaut	26
/ Tournai	28
/ Mons	30
/ Charleroi	32
Contacts	34

Word of the editor

Dear student,

You have chosen to spend your mobility for studies or traineeship in a higher education institution member of the Pôle hainuyer. The latter is a structure which gather higher education institutions of the Province of Hainaut in Belgium.

We are very happy to welcome you here and we will do our best to ensure your mobility experience is as profitable and pleasant as possible. This guide you are holding now provides useful information and advice that will make it easier to prepare your journey and ensure your stay runs smoothly.

You are now ready to discover a new living environment. Many questions probably play on your mind : who to get in touch with upon your arrival... and before your departure ? How can you travel to the host city by public transport ? How should you book your accommodation ? What kind of insurance do you need to subscribe ? We will try to answer those questions to the best of our abilities in this document.

You will find a check list with all you need to do before, during and after your stay, an excellent way to make sure that only good surprises will await you here !

This guide also includes tips that will help you to discover a few cities of Hainaut. Read it before you leave and take it with you !

Looking forward to greeting you in person, we wish you a happy reading and welcome you already.

The co-chairs of the Pôle hainuyer :

P. DUBOIS

Rector of Mons University

D. Dufrane

Director-Chairman of the HEH

1. Belgium in brief

Bordering on The Netherlands in the north, Germany and the Grand Duchy of Luxembourg in the east, France in the south and the North Sea in the west, Belgium covers a surface of 30,528 km² with a population of nearly 12.000.000 inhabitants.

As a founding member of the European Union (EU) Belgium welcomes, in its capital Brussels, the headquarters of many European (including the European commission and the European parliament) and international organisations (such as the headquarters of the North Atlantic Treaty Organisation NATO).

Belgium is a constitutional and parliamentary monarchy that has been independant in 1830. His present King is Philip I. As a federal state, it includes three Regions (the Walloon region, the Flemish region and the Brussels-Capital region) and three Communities (the French community also called Wallonia-Brussels Federation, the Flemish community and the German-speaking community). Dutch is spoken in the Flemish region; the northern part of the country whereas French is spoken in the Walloon region, in the south. In eastern districts, the main language is German. In Brussels, the capital of Europe, 80% of the 1,300,000 inhabitants of the city are French-speaking. English is also used by many inhabitants of the country.

Belgium is composed of ten provinces including the province of Hainaut, where you will be welcomed. Located in the Walloon region, the capital of the province of Hainaut is Mons and the major other cities are Charleroi, La Louvière, Mouscron and Tournai.

Among the most famous, widely recognised Belgians are the singer/song-writers Jacques Brel and Stromae; the singer Alice on the Roof; the actors Benoît Poelvoorde and Matthias Schoenaerts; the writers Amélie Nothomb,

MAGRITTE



Georges Simenon (Commissaire Maigret), Maurice Maeterlinck (awarded the Nobel Prize in Literature in 1911); the godfathers of comic book writing : Franquin (Gaston Lagaffe), Hergé (creator of Tintin), Morris (Lucky Luke) and Peyo (The Smurfs); artist and caricaturist Pierre Kroll (whose drawings can be found in this brochure); the film directors Jean-Claude Van Damme, Jaco Van Dormael, Jean-Pierre and Luc Dardenne; the painters James Ensor and René Magritte, and the sports stars David Goffin (tennis), Eden Hazard (football), and Nafissatou Thiam (athletics).

Belgium is also the country of chocolate, beer and of course mussels served with French fries! It is a friendly country that offers plenty of historic, artistic, gastronomic, architectural and natural treasures that we invite you to discover.

2. Education

/ Higher Education in the Wallonia-Brussels Federation /

The European higher education area (EHEA), which came out of the Bologna process, is known for promoting and facilitating mobility through the structures it has put in place, which :

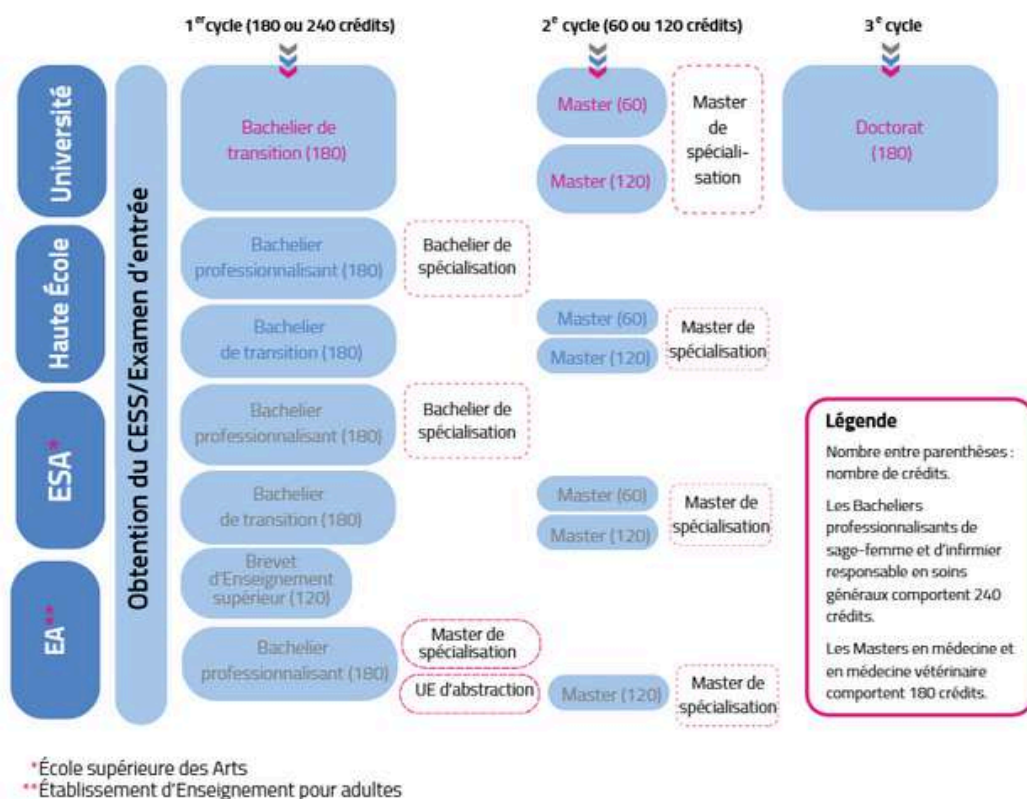
- establish a system enabling the comparison of qualifications ;
- are founded on 3 levels, or cycles, of higher education studies.

The Wallonia-Brussels Federation has more than 120 higher education institutions, offering four different types of education : Universities (U), University colleges (HE), Arts colleges (ESA) and Adult higher education institutions (EPS). They offer qualifications such as higher education diplomas, academic-

oriented Bachelor's degrees and professional-oriented Bachelor's degrees, Master's degrees and PhDs corresponding to three study cycles.

The European Credit Transfer System (ECTS) enables and encourages student mobility. A credit is a unit of the work completed by a student within the framework of their different learning activities (teaching, supervised work, work placements, individual and group work, studies, research, etc.), which are grouped together in the teaching units of students' study programmes (1 ECTS = 0,5 US credit). One full academic year represents a workload of 60 credits, with one credit representing 30 hours of work.

Higher Education in the Wallonia-Brussels Federation (not including bridge programmes)



/ The Pôle hainuyer, a Higher Education Hub /

The Pôle hainuyer groups together 35 partner institutions. It offers nearly 650 initial and continuing education programmes (from Bachelor to PhD), covering 21 fields of study, throughout the province of Hainaut.

The Pôle hainuyer is one of five academic centres put in place, alongside the Académie de Recherche et d'Enseignement Supérieur (ARES), by the decree of 7th November 2013, known as the Décret Paysage. This decree has redefined higher education and the academic organisation of studies in the French Community of Belgium.

More precisely, the Pôle hainuyer is made up of 35 higher education institutions throughout the Belgian province of Hainaut. Its partner institutions include 3 Universities (UMONS, UCL, ULB), 3 University colleges (Haute Ecole en Hainaut, Haute Ecole Louvain en Hainaut, and Haute Ecole Provinciale de Hainaut-Condorcet), 3 Arts colleges (Arts au carré, Académie des Beaux-Arts de la Ville de Tournai, and Ecole supérieure des Arts Saint-Luc de Tournai), and 26 Adult higher education institutions (EA).

For more information,
please visit our website

www.polehainuyer.be



More than 35,000 students are presently registered at Pôle hainuyer institutions.

The Role the Pôle hainuyer

The Pôle hainuyer provides a place for concertation and dialogue between its partner institutions, and, as such, one of its main roles is to support the collaborations between these institutions, and to encourage them to work together to offer quality services to students.

The work of the Pôle hainuyer covers :

- providing information on study programmes and guiding students in choosing what course is best for them ;
- helping students to succeed in their studies and assisting with reorientation ;
- collaborating on collective services ;
- offering assistance to students with specific needs ;
- promoting international mobility ;
- research.





/ Studying at an institution of the Pôle hainuyer /

Have you decided to complete part of your studies in Belgium, and chosen to follow courses in the province of Hainaut ? Be assured that everything will be done to ensure your stay will not only be an academic success, but also a personal one.

Each institution of the Pôle hainuyer has an International Relations Department (SRI), or similar, that will be your main contact. That department will liaise with the SRI of your home institution. It is also in charge of welcoming you, supporting you with all your administrative procedures and answering all the questions you might have about transport, accommodation, health, etc. It will also introduce you to your Academic Co-ordinator who will be in charge of your academic supervision, the validation of your Learning Agreement and answer any question you might have.

Upon arrival, get in touch right away with both your host institution SRI (see details on the next pages) and. In adult education there is no actual SRI. For any information please contact the institution in question (see www.polehainuyer.be > Partner institutions > Adult higher education institutions).

/ Education and Sustainable Development /

To make your stay sustainable, adopt the 4Rs method: "Reduce, Reuse, Repair, and Recycle".

Also, refer to the eco-tips on page 25.

**Calculate your
ecological
footprint**



**Calculate your
carbon footprint**



/ International Relations Departments /



Université de Mons (UMONS)



International Relations Office

Place du Parc, 20 - 7000 Mons

Visits (by appointment) :

Rosa Parks

Avenue Frère Orban, 9

7000 Mons

.....
Incoming International Students

incoming.relint@umons.ac.be

www.umons.ac.be



Université catholique de Louvain (UCLouvain)



Student Mobility Office

Service administratif de soutien
aux facultés et instituts (SAFI)

Campus FUCaM Mons

Chaussée de Binche, 151 (bât. I)

7000 Mons

+32(0)65 32 33 62

safi@uclouvain.be

www.uclouvain.be/mons

.....

Student Mobility Office

Campus Tournai

Rue du Glategnies, 6

7500 Tournai

+32(0)69 857 810

loci-tournai@uclouvain.be

www.uclouvain.be/tournai

Université libre de Bruxelles (ULB)



Student Mobility Office

Campus du Solbosh

ULB CP183

Avenue F.D. Roosevelt, 50

1050 Bruxelles

mobilite@ulb.be

www.ulb.be



(HE)

Haute Ecole provinciale de Hainaut-
Condorcet (HEPH-Condorcet)



Haute Ecole en Hainaut (HEH)



Commitee for international relations

Rue Pierre-Joseph Duménil, 4
7000 Mons

.....
Laurence Baras

+32 (0)498 11 46 64

+32 (0)65 34 79 83

laurence.baras@heh.be

www.heh.be

International Relations

Digue de Cuesmes, 29
7000 Mons

.....
Claire Avril

+32 (0)65 38 49 06

claire.avril@condorcet.be

www.condorcet.be

Haute Ecole Louvain en Hainaut (HELHa)



International Relations Department

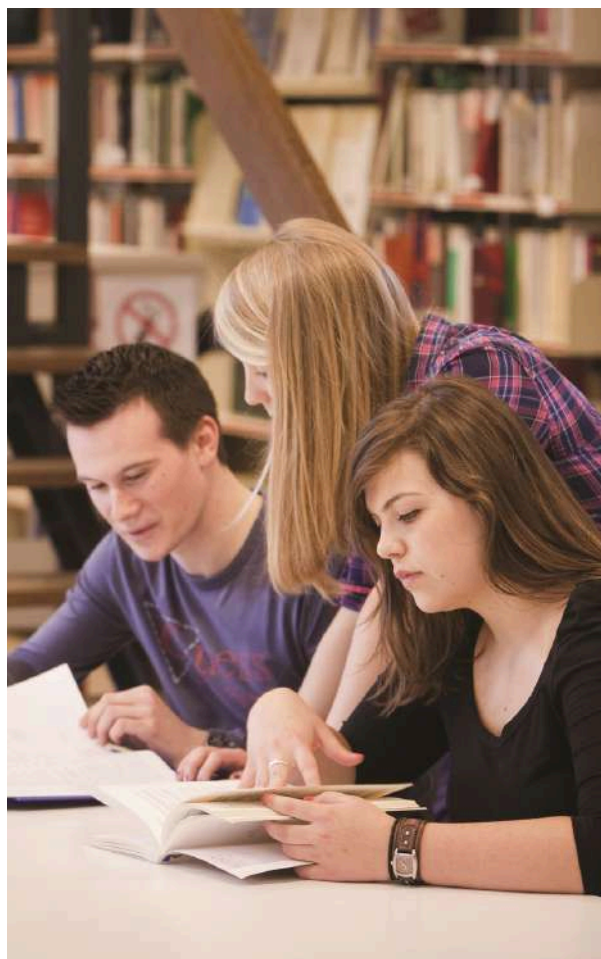
Chaussée de Binche, 159
7000 Mons

.....
Pauline Cornil

+32 (0)65 40 41 66

international@helha.be

www.helha.be



Arts au carré (ARTS²)

ARTS²

ÉCOLE SUPÉRIEURE DES ARTS
ACADEMY OF ARTS

International Relations

Rue de Nimy, 7
7000 Mons

.....
service.erasmus@artsaucarre.be
www.artsaucarre.be

Académie des Beaux-Arts de la Ville de Tournai (AC'T)



International Relations

Rue de l'Hôpital Notre-Dame, 14
7500 Tournai

.....
Thomas Boucart
+32 (0)497 50 20 87
+32 (0)69 84 12 63
thomas.boucart@actournai.be
www.actournai.be

Another contact in your host institution:

Your host institution study secretariat acts as intermediary between the teachers and their students.

Regularly consult the notice board that displays lots of information (course schedules, rooms, etc.).

You will find your host institution's secretariat details on the Pôle hainuyer's institutions websites (see contacts).

(ESA)

Ecole Supérieure des Arts Saint-Luc Tournai (ESASLT)



International Relations

Chaussée de Tournai, 7
7520 Ramegnies-Chin

.....
Jean Delquignies
+32 (0)69 25 03 66
erasmus@saintluctournai.be
sup.saintluctournai.be

(EA)

Enseignement pour adultes (EA - Adult education)



Contact the Adult higher education institution concerned

(see www.polehainuyer.be > Partner institutions > Adult higher education institutions)

/ Academic calendar /

Each academic year has 3 terms :

- **The first term** runs from **mid-September to the end of January** ;
- **The second term** is from **the beginning of February until the end of June** ;
- **The third term** starts on **1st July** and runs through the **summer holidays** and the **resit exam period**.

Each of these terms has an evaluation period for students to acquire credits. Exams are organised at the end of each term: in January and late May-early June. A second exam session stretches from mid August to the start of September, which enables the students to resit exams where they did not achieve satisfactory results. Special exam periods and/or modalities can be granted to the international students. Find out about those possibilities at the start of the term from the academic co-ordinator of your host institution (see details pages 8-10).

The threshold to pass is set to 10/20 by Education Unit. The Transcript of Records – TOR will be presented to your home institution and you will receive a copy in the weeks after the end of your stay.

The academic calendar does not apply to Adult higher education institutions, find out more from the Adult education Colleges concerned ([see www.polehainuyer.be](http://www.polehainuyer.be)).



Annual holidays



Academic calendar



12.09.25

Welcome day of international students



15.09.25

Beginning of learning activities



27.09.25

Festival of the French Community



01.11.25

All Saints



11.11.25

Armistice



22.12.25 > 04.01.26

Break



05.01.26 > 24.01.26

Exams



02.02.26

Re-start of learning activities



01.05.26

Labour day



14.05.26

Ascension



25.05.26

Pentecost



26.05.26 > 04.07.26

Exams



06.07.26 > 08.08.26

Break



10.08.26 > 12.09.26

Exams

/ French language /

French is the main teaching language within the institutions of the Pôle hainuyer. It is therefore essential that students sufficiently master the French language, both orally and in writing, to succeed in their learning activities. Some institutions offer intensive French as foreign language courses (FLE) at the start of each academic year.

Those courses are free of charge for international students.

If you wish to benefit from those French language courses, please inform the International Relations Service of your institution or your international co-ordinator (see details pages 8-9).

/ Libraries /

All the libraries of the institutions of the Pôle hainuyer represent more than one million of resources available to borrow or to consult: novels, technical books and magazines.

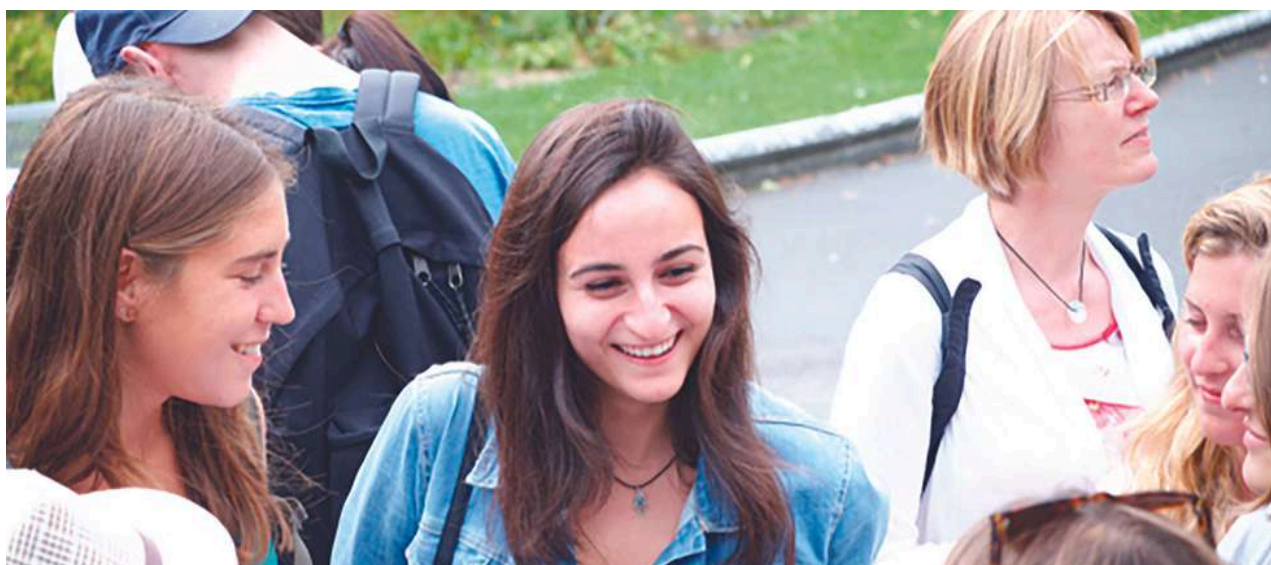
Those libraries provide the public with digital workspaces and WIFI access for all.

They also have extremely rich and diverse heritage funds: thousands of antique prints, and several hundreds of manuscripts with the oldest one dating back to the 10th century. There is also a large collection of local newspapers with many of them dating back to the 19th century.

You will find all the information about those libraries on the PH institutions' websites (see contacts).

The digital campuses

Don't forget to consult the digital platform proposed by your host institution. It includes all the educational and administrative information easing relation between teachers and students (digital announcements, online courses, Learning Agreement for Traineeship, etc.).



/ Student life /

Student life is not limited to lectures, practice or laboratories. The institutions of the Pôle hainuyer provide numerous leisure and entertainment opportunities: sports or cultural activities, various associations...

Sports and Culture



In that field, the institutions of the Pôle hainuyer have a double objective : making sports and culture available to everyone by organising sports and cultural activities at affordable prices, and creating bonds between all the students, irrespective of their institution, their campus or their study field.

If you wish to practise sports, music, theatre or take part in various cultural excursions in a convivial atmosphere, please refer to the website of your host institution (see contacts) or look for information from the contact persons indicated on pages 14-16.

Orchestra and Choir



Are you a keen music fan, do you play an instrument or do you like to sing a few notes from time to time, with or without experience?

Join one of the initiatives proposed by our institutions.

Associations



The students of the institutions of the Pôle hainuyer are grouped in associations. The latter differ depending on the institution, campus or Faculty/Department in which students are enrolled in. They communicate via websites, forums or social networks. Check the website of your host institution to find out what you can do (see contacts).

Among these associations, the Erasmus Student Network (ESN) is an association that focuses on helping and integrating Erasmus students, in particular through the organisation of parties and various extra-academic activities.

If you wish to find out more, search for ESN Mons on social networks.



Tourism

The Office de Promotion du Tourisme (OPT) of Wallonia and Brussels' mission is to help you discover and appreciate the charms of our region. Don't hesitate to visit their website to find more information on the city you are interested in (www.opt.be).

Université de Mons (UMONS)



Culture Unit

mumons@umons.ac.be

**MUMONS, Musée des Sciences, Arts
et Curiosités de l'UMONS**

+32 (0)65 37 22 15

<https://mumons.be>

Sports Unit

sport@umons.ac.be

Perrine Dagonnier

+32 (0)65 37 37 06

perrine.dagonnier@umons.ac.be

[https://web.umons.ac.be/fr/vie-
campus/umons-sport/](https://web.umons.ac.be/fr/vie-campus/umons-sport/)

Université catholique de Louvain
(UCLouvain)



Student support services

Campus FUCaM Mons

+32(0)65 32 33 27

info-mons@uclouvain.be

Campus Tournai

+32(0)69 85 78 10

loci-tournai@uclouvain.be

Université libre de Bruxelles (ULB)



ULB Culture

+32 (0)2 650 37 65

culture@ulb.be

www.ulb.ac.be/culture

ULB Sports

+32 (0)2 650 21 78

ulbsports@ulb.be





(HE)

Haute Ecole provinciale de Hainaut-
Condorcet (HEPH-Condorcet)



Culture commission

Désiré Nkizamacumu

+32 (0)65 88 12 18

desire.nkizamacumu@condorcet.be

Sport commission

Yannick Miserque

+32 (0)478 59 59 50

yannick.miserque@condorcet.be

Haute Ecole en Hainaut (HEH)



Cultural activities

Perrine Coquelet

+32 (0)494 98 94 20

communication@heh.be

Sport activities

Krystel Bavier

+32 (0)476 29 69 06

krystel.bavier@heh.be

Haute Ecole Louvain en Hainaut (HELHa)



Culture and Sport Unit

Xavier Carlier

+32 (0)477 76 65 91

carliezx@helha.be



Arts au carré (ARTS²)

ARTS²
ÉCOLE SUPÉRIEURE DES ARTS
ACADEMY OF ARTS

Culture and Sport Unit

Gwénaëlle L'hoste

+32 (0)476 61 21 43

communication@artsaucarre.be

Académie des Beaux-Arts de la Ville de
Tournai (AC'T)

ACT ESA ACADEMIE
BEAUX-ARTS
TOURNAI

Culture and Sport Unit

Thomas Boucart

+32 (0)497 50 20 87

erasmus.secretariat@actournai.be



(ESA)

Ecole supérieure des Arts Saint-Luc
Tournai (ESASLT)

st!uc
ESA Tournai

Culture and Sport Unit

Jean Delquignies

+32 (0)69 25 03 66

erasmus@saintluctournai.be

(EA)

Enseignement pour adultes (EPS - Adult
education)

eps
Enseignement
de Promotion Sociale

Cultural and sports news is available
on the websites of adult higher
aduction institutions.

*see www.polehainuyer.be > Partner
institutions > Adult higher education
institutions)*

3. Useful informations

/ Administrative procedures /

Before departing to your host institution, you will need to comply with various formalities. We recommend you to consult the website of your host institution (see contacts) to know them thoroughly. These are some of the essential tasks to carry out for your mobility.



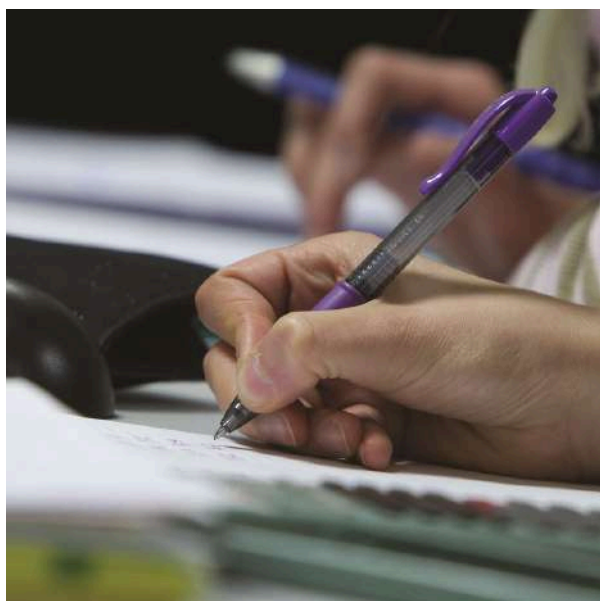
Before your departure

- Draw up a **first Learning Agreement** with the academic co-ordinator of your home institution.
- Send a **first e-mail contact with the International Relations Department (SRI)** of your host institution (see details pages 7-8).
- Download and complete the **application form** available on your host institution's website or received by email. (see contacts).
- Fill in your **application form**, sign it, have it signed by the Academic co-ordinator of your home institution and send it to your host institution.
- Make sure to find **accommodation**. Do not hesitate to ask for advice from your host institution that can help you.
- Make sure your **identity card and/or passport is valid**.
- Check whether you need a **visa** to study in Belgium.
- Check whether you dispose of an **internationally valid healthcare insurance**. Be aware that a valid healthcare insurance is mandatory in Belgium !
- Check whether your **credit/debit card** is accepted in Belgium.
- Check whether the **debit limit**.



Before your departure

- Ask the SRI to sign the **second part of your "Departure form/certificate"**.
- Ask the SRI of your host institution and home institution to find out whether **other administrative return documents** must be filled in.
- Inform the **municipal administration of the city** you reside in and your **health insurance of your departure**.



Upon your arrival

- Go to the **SRI** of your host institution to complete your enrolment file.
- Register with the **'foreigners' department of the municipality** where you stay. You will have to fill in a document entitled "Annex 33" in 4 copies. You will have to provide 4 ID photos, a school certificate, an Erasmus certificate, a valid identification (identity card or passport) and, depending on the municipality, you might have to pay a small administrative fee amounting to a few euros. You will be given a copy of that Annex 33, which you will need to keep with your ID documents for the duration of your stay!
- Ask the SRI to sign the **first part of the "Arrival form/certificate"**.

Good to know

The report of your marks obtained for the exams organised by your host institution (Transcript of Records) guarantees the recognition of ECTS credits and ensures the transparency of the marking system. This document will be sent automatically to the SRI of your home institution as soon as your exams are evaluated (end January, end June or end September). You will receive the summary of your marks within five weeks after your departure.

/ Transport /

Airports

The 2 major airports in Belgium are :

- **Brussels Airport**

The railway station is located at level -1 of the airport. The Brussels Airport Express train runs four times per hour to the stations of Bruxelles Nord, Bruxelles Central and Bruxelles Midi. From there you can take another train to Mons, Charleroi, Tournai, etc.

www.brusselsairport.be

- **The airport of Charleroi-Brussels Sud is located in Gosselies (Brussels South Charleroi Airport).**

At Charleroi airport, you can buy a single ticket 'to any Belgian station' from the available ticket machines. That ticket combines the TEC bus journey (from the airport to the railway station of Charleroi-Sud) and the train journey (to any Belgian railway station). Two ticket vending machines are located outside the airport at gate 2.

There are also FlixBus shuttles at Charleroi Airport that offer bus transport services connecting the airport to several destinations in Belgium and neighboring countries.

www.brussels-charleroi-airport.com

Railways

Besides a single or return ticket, the Société Nationale des Chemins de Fer belges (Belgian National Railway Company-SNCB/MIVB) also offers other travel tickets :

- **Train+**

For those under 26 years old:

- You pay a maximum of €5.50 per journey (2nd class) regardless of the time and number of kilometers

- 40% extra discount (on top of your already reduced fare) during off-peak hours (9 a.m. to 4 p.m. and 6 p.m. to 6 a.m.), Saturdays, Sundays, and public holidays

- Only €4/month, or €32/year.

A "Train+" option for those over 26 years old is also available.

- **Carte Interrail**

It is also possible to travel without restriction throughout Europe during one month with the Interrail card.

You don't need to validate the ticket on the platform, the ticket inspector will do it on board. Please note that all Belgian trains are no-smoking.

To discover all the SNCB offers, to check the train schedules and to buy tickets online, visit www.belgianrail.be or find out directly at the station.

LES ROUTES BELGES



Bus

The TEC public transport company (Transport en Commun) offers a large bus network throughout Wallonia. You can choose your ticket depending on your travel frequency (single ticket, card or season ticket).

The "EXPRESS" subscription is also available for young people aged 18 to 24. For just €12 per year, this subscription allows unlimited travel across the entire TEC network in Wallonia, providing access to all bus lines in the region.

Please visit www.letec.be for more information.

Good to know

It is possible to travel around **Mons** thanks to 'Intramuros' shuttle buses (€6/20 journeys). Timetable: during the week, one bus every 15 minutes between 5:30am and 8pm, and one bus every 20 minutes from 9am to 5:30pm on Saturday.

In **Charleroi**, you can also take the underground. Consult www.letec.be for underground zones, fares and conditions.

To find real time information about public transport in Mons (arrival and departure times, alerts, etc.), download the Google Maps application.

Travel green!

For the planet, choose the least impactful mode of transportation to move around and explore Europe. Visit the page www.agirpourtatransition.ademe.fr.



/ Accomodation /

There are two types of student accommodation : **accommodation offered by institutions and private lodgings.**

Warning: we advise you that you start looking for accommodation as soon as possible! If you wish to benefit from accommodation at one of the institutions of the Pôle hainuyer, consult its website to find out about the procedures and above all, the deadlines for your application (see contacts). If you wish to find private accommodation, you can ask for advice from the SRI of your host institution (see details pages 8-10).

In both cases, you should ideally begin to look for accommodation around March for the following academic year.



Institution accomodation

The catalogue with all the information about accommodation offered by institutions and lists with private accommodation are usually available at your host institution's SRI.

The rooms (also called "kots"), located in student residences can be single or double. They are furnished and often have a shower. Kitchens usually are shared.

The monthly rent for an accommodation in an institution is approximately 350€, provision not included for heating and water. A one month deposit is required.

Private accomodation

Private student accommodation in the city usually consists of rooms (kots) that can be either located in the landlord's house (kots in private homes) or "studios". Private kots are similar to those provided by the institutions. You can also rent a "studio", furnished or not, where you will have a private shower and kitchen. Rent is usually more expensive for studios.

Usually, rental periods are either 10 or 12 months. However, it is sometimes possible to reach an agreement with the landlord for a shorter rental period. The average monthly rent for a furnished kot is approximately 350€ - 400€ without charges (renting costs for electricity, water and heating).



Youth hostels

Youth hostels are an ideal solution for a few nights.

"Un toit, deux âges"



An alternative to accommodation offered by institutions or individuals: inter-generational accommodation. If you wish to combine economic concerns and conviviality, contact the association " Un toit, deux âges " (One roof, two ages).

www.inforjeunes.be

www.kotamons.be

www.student.be

www.kotplanet.be

www.1toit2ages.be

www.lesaubergesdejeunesse.be



Accidents and illnesses in the context of :	an activity linked to the study sector	Insurance subscribed by the school	Contact the SRI of your home or host institution.
		Insurance not subscribed by the school	Let your contracted insurance intervene in your home country or in Belgium.
	a private activity	CEAM	By presenting your CEAM and your identity card (or passport) to the health professional consulted or in a public hospital, you will receive identification labels to benefit from the necessary medical care whilst remaining under the insurance system of your home country. You can also involve your possible complementary insurance.
		No CEAM	Let your contracted insurance intervene in your home country or in Belgium.

Insurance

In Belgium, individual healthcare insurance is mandatory. You must be insured in all cases.

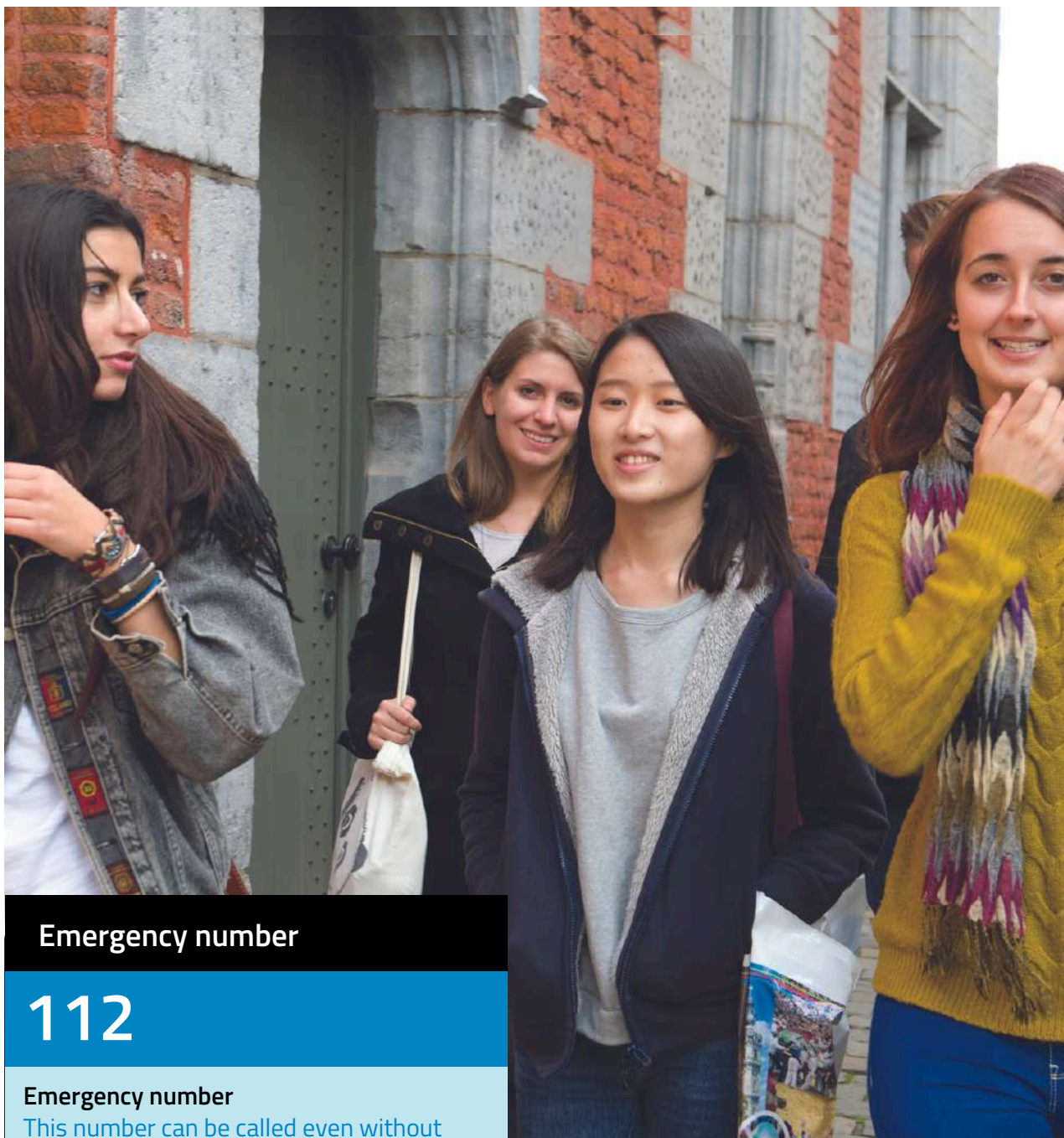
If you come from a country of the European Economic Space, EEE (EU + Iceland, Norway, Lichtenstein and Switzerland), you are insured by your national insurance system.

Upon your request your healthcare insurance company in your home country will provide you with a European Health Insurance Card (CEAM). This is valid for one year maximum and will enable you to become member of a so-called 'mutuelle' in Belgium, in order to benefit from the reimbursement of medical expenses under the same conditions that apply to Belgian residents.

Note that the same principles apply to students from countries which have signed a bilateral agreement with Belgium on healthcare insurance. Find out from your healthcare insurance company in your home country or a 'mutuelle' in Belgium. An 'all inclusive' mobility insurance can also be subscribed with a private insurance company to obtain a refund of all incurred expenses.

If you come from a country outside the EEE, you must have a healthcare insurance policy to reside in Belgium. Some insurance companies offer additional policies that cover hospitalisation and other medical expenses, repatriation, illness or accidents that occur during your stay abroad.

Furthermore, international students can sometimes benefit from a collective insurance policy underwritten by their home or host institution to cover accident occurring during student activities. Find out from the SRI of your home or host institution (see details pages 8-9) whether it is possible and don't forget to check what you are covered for (accidents, repatriation, civil liability, etc.) as well as the intervention conditions (on the way to the institution, during excursions it organises and in case of participation in educational activities organised on its premises).



Emergency number

112

Emergency number

This number can be called even without card or credit

105

Red Cross

Help and intervention in case of accident

1733 (paid for service)

Out-of-hours service

To find out who is the on-call doctor in your region

070/245 245

Anti poison centre

Poisoning and burns

www.poisoncentre.be

Pharmacies on call

To know the pharmacy on call of your region, enter your postcode on www.pharmacie.be

/ Day-to-day life /

Money

The euro (€) is the currency used in Belgium. Numerous ATMs are at your disposal (Bancontact/Mister Cash, Visa, Mastercard, Maestro, etc.). They generally work with most credit and debit cards

If you open a bank account in Belgium upon your arrival, you will need to submit following documents :

- identity card or passport ;
- your kot/studio's address ;
- A Social Security certificate or a a host institution's enrolment certificate.

Telephone

The major mobile telephone companies in Belgium are Proximus, Mobistar and Orange.

You can easily buy a SIM card with a local call number and small communication credit in a mobile phone shop. The cards to reload your communication credit can be bought in the same shops, but also in supermarkets, newsagents, etc.

Two eco-tips:

- Keep your smartphone for as long as possible!
- Refer to "The Responsible Digital Guide"



Shops and services

There are many shops and services (shops, banks, post offices, cybercafés, launderettes etc.) in your host city. Usual opening times are from 9 am to 6 pm, from Monday till Friday or Saturday. Shops and services are closed on Sundays but night shops can help you 24/7.

Catering

The institutions of the Pôle hainuyer provide numerous catering facilities. Depending on the campus, sandwiches and/or hot meals are available at democratic prices. To know the available restaurants and cafeterias in your host institution, visit its website (see contact). Please note that numerous snackbars and restaurants are also available in the cities around the campuses.



Waste management

In Belgium household waste and other waste is subject to selective sorting and collected regularly. In order to know about the collection schedule (dates and times to put your bins outside) in your region, download the mobile application "Recycle!" or consult the websites of the organisations below :

- Braine-le-Comte : www.inbw.be
- Charleroi, Gosselies, Fleurus, Marcinelle, Loverval : www.icdi.be
- La Louvière, Mons, Morlanwelz, Saint-Ghislain : www.hygea.be
- Ath, Leuze-en-Hainaut, Mouscron et Tournai ; ainsi que Thuin, Sivry-Rance : www.ipalle.be

Garbage bags are chargeable and available in supermarkets.

Eco-Tips

Think sustainable and consume local, seasonal, and fair-trade!

Where to find local organic products?



Seasonal Consumption Calendar



4. Plans



Université de Mons (UMONS)



Haute Ecole provinciale de Hainaut-Condorcet (HEPH-Condorcet)



Université catholique de Louvain (UCLouvain)



Arts au carré (ARTS²)



Université libre de Bruxelles (ULB)



Académie des Beaux-Arts de la Ville de Tournai (AC'T)



Haute Ecole en Hainaut (HEH)



Ecole Supérieure des Arts Saint-Luc Tournai (ESASLT)



Haute Ecole Louvain en Hainaut (HELHa)



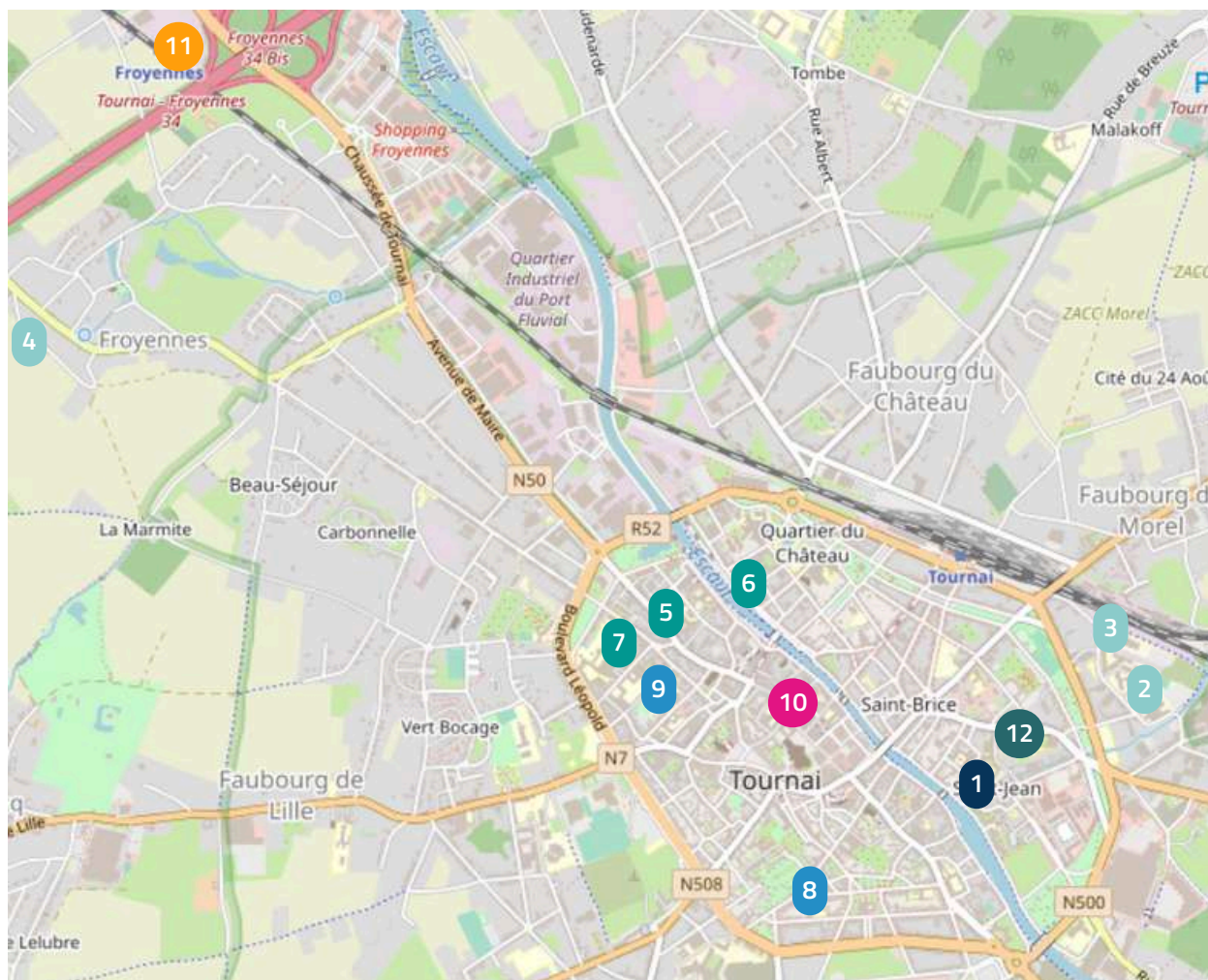
Enseignement pour Adultes (EA)





Find the different
sites throughout
Hainaut on Google
maps

/ Tournai /



Université catholique de
Louvain (UCLouvain)



Haute Ecole Louvain en
Hainaut (HELHa)



- 1 Campus Tournai**
Rue de Glategnies, 6 - 7500 Tournai
Reception, information and registration
Faculty of architecture, architectural
engineering and urban planning (LOCI)

- 5 Rue de l'Ecorcherie, 18 - 7500 Tournai**
Social Studies
6 Quai des Salines, 28 - 7500 Tournai
Nursing and Health Care
7 Rue Frinoise, 12 - 7500 Tournai
Technology

Haute Ecole provinciale de
Hainaut-Condorcet (HEPH-
Condorcet)

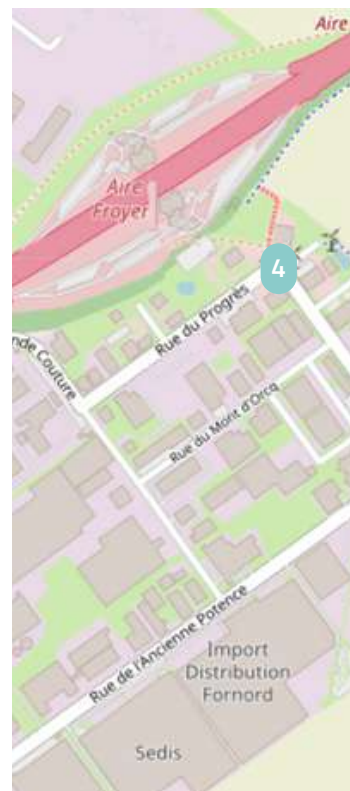


Haute Ecole en Hainaut
(HEH)



- 2 Rue Paul Pastur, 73 - 7500 Tournai**
Department of Motor Sciences
Department of Economic, Legal, and
Management Sciences
3 Rue Paul Pastur, 2 - 7500 Tournai
Department of Public Health
Department of Science and Technology
4 Rue du Progrès, 13 - 7503 Froyennes (Negundo)
Department of Economic, Legal, and
Management Sciences
Department of Science and Technology

- 8 Rue du Chambge, 23 - 7500 Tournai**
Department of Legal, Economic and
Management Sciences – DSJEG
9 Rue des Carmes, 19b - 7500 Tournai
Department of Educational Sciences and
Teaching – DSEE
Department of Social Sciences – DSS



Académie des Beaux-Arts de
la Ville de Tournai (AC'T)



- 10** Rue de l'Hôpital Notre-Dame, 14
7500 Tournai
Reception, information and registration
Plastic, visual and space arts

Enseignement supérieur
pour adultes (EA)



- 12** Etablissement d'Enseignement pour
Adultes et de Formation Continue (EAFC)
Tournai Eurométropole
Rue des Moulins 4 - 7500 Tournai

Ecole Supérieure des Arts
Saint-Luc Tournai (ESASLT)



- 11** Chaussée de Tournai, 7
7520 Ramegnies-Chin
Plastic, visual and space arts



Université de Mons (UMONS)



- 1 **Place Warocqué, 17 - 7000 Mons**
School of human and social sciences - Law school - Faculty of psychology and education - Warocque school of business and economics
- 2 **Rue d'Havré, 88 - 7000 Mons**
Faculty of architecture and urban planning
- 3 **Avenue du Champ de Mars (Plaine de Nimy) - 7000 Mons**
Faculty of medicine and pharmacy - Faculty of science - Faculty of translation and interpretation - EII
- 4 **Rue de Houdain, 9 - 7000 Mons**
Faculty of engineering
- 5 **Avenue Frère Orban, 9 - 7000 Mons**
Reception, information, registration and International Relations Office

Université catholique de Louvain (UCLouvain)

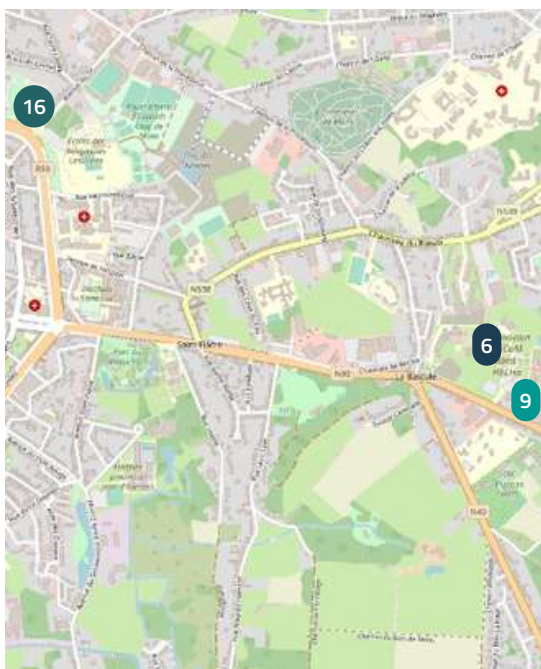


- 6 **Campus FUCaM Mons**
Chaussée de Binche, 151 - 7000 Mons
Reception, information and registration
Faculty of economic, social and political sciences and communication (ESPO)
- 7 **Ateliers des FUCaM**
Rue des Sœurs Noires, 2 - 7000 Mons
Reception and information
ateliers-mons@uclouvain.be

Haute Ecole provinciale de Hainaut-Condorcet (HEPH-Condorcet)



- 8 **Chemin du Champ de Mars, 15 - 7000 Mons**
Department of Public Health
Department of Education Sciences
Department of Economic, Legal, and Management Sciences
Department of Marketing, Tourism, and Hotel Management



Haute Ecole Louvain en Hainaut (HELHa)

HELHa
Haute Ecole Louvain en Hainaut

- 9** Chaussée de Binche, 159 - 7000 Mons
Applied Arts, Business Studies, Education, Social Studies, Technology and Engineering



Arts au carré (ARTS²)

ARTS²
ECOLE SUPERIEURE DES ARTS
ACADEMY OF ARTS

- 14** Rue des Sœurs Noires, 4a - 7000 Mons
Plastic and visual arts (academy of arts) - Theatre (royal conservatoire)
- 15** Rue de Nimy, 7 - 7000 Mons
Secretariat - Music (royal conservatoire)

Haute Ecole en Hainaut (HEH)

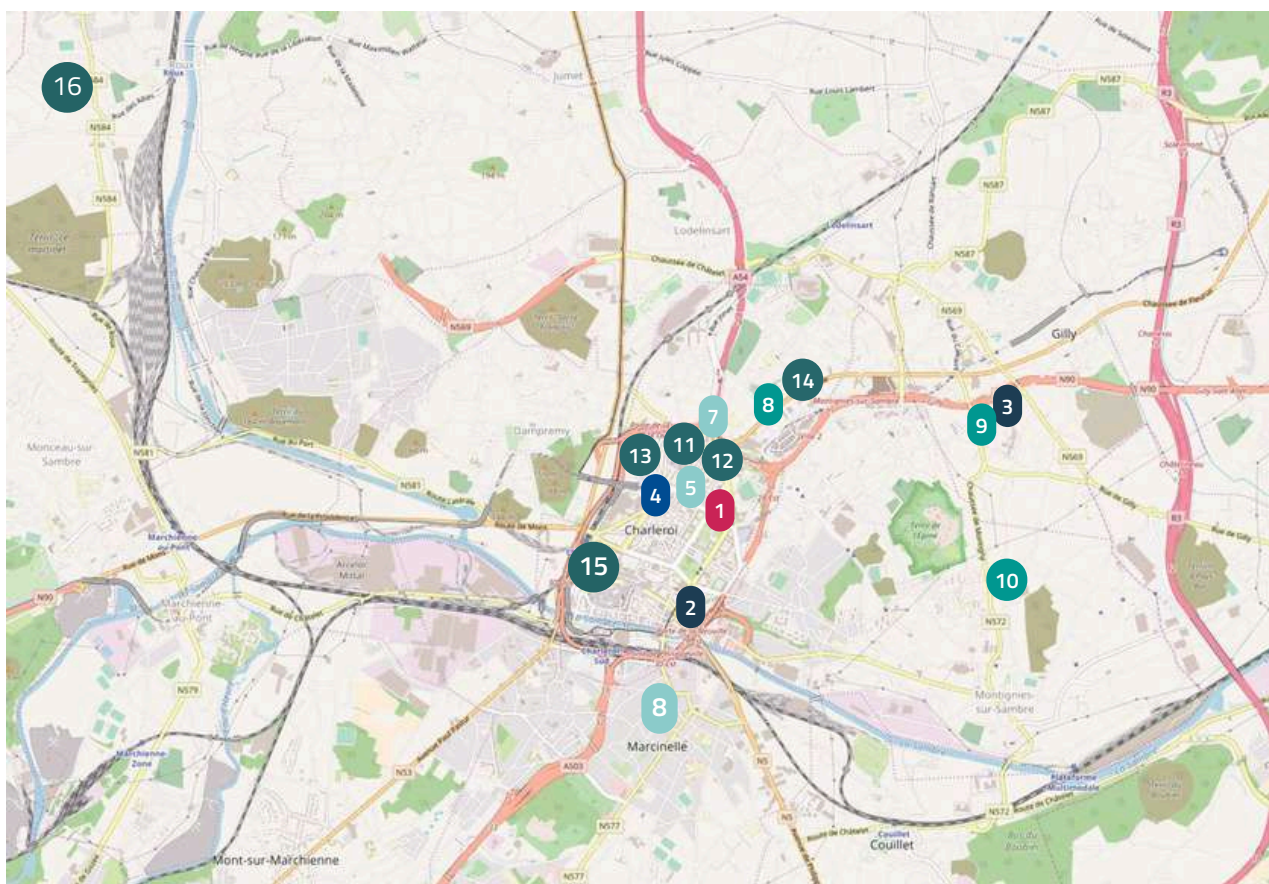
HEHbe
Haute Ecole en Hainaut

- 10** Rue Pierre-Joseph Duménil, 4 - 7000 Mons
Reception, information
- 11** Avenue Victor Maistriau, 13 - 7000 Mons
Department of Social Sciences - DSS
- 12** Avenue Victor Maistriau, 8a - 7000 Mons
Department of Sciences and Technologies - DST
- 13** Boulevard Albert-Élisabeth, 2 - 7000 Mons
Department of Educational Sciences and Teaching - DSEE

Enseignement pour adultes (EA)

eps
Enseignement de Promotion Sociale

- 16** Institut Provincial Supérieur Henri La Fontaine
Avenue du Tir, 10 - 7000 Mons
- 17** Institut Reine Astrid de Mons (IRAM)
Chaussée de Binche, 159 - 7000 Mons
- 18** Etablissement d'Enseignement pour Adultes et de Formation Continue (EAFC)
Jean Meunier
Avenue Roi Albert, 643 - 7012 Jemappes



Université de Mons (UMONS)

UMONS
Université de Mons

- 1 MONS Site Charleroi**
Bâtiment Zénobe Gramme
Boulevard Solvay 31 - 6000 Charleroi
Reception, information and registration -
Faculty of Engineering – Faculty of
Psychology and Education – Faculty of
Science – Warocqué School of Business
and Economics – School of Human and
Social Sciences – Faculty of Architecture
and Urban Planning

Université catholique de
Louvain (UCLouvain)

UCLouvain

- 2 Maison Georges Lemaître**
Boulevard Devreux, 6 - 6000 Charleroi
Reception, information
- 3 Campus HELHa - UCLouvain**
Rue Trieu Kaisin, 134 - 6061
Montignies-sur-Sambre
Reception and information- Louvain School
of Engineering (EPL) - Faculty of economic,
social and political sciences and
communication (ESPO) -Louvain School of
Management (LSM)

Université libre de Bruxelles
(ULB)

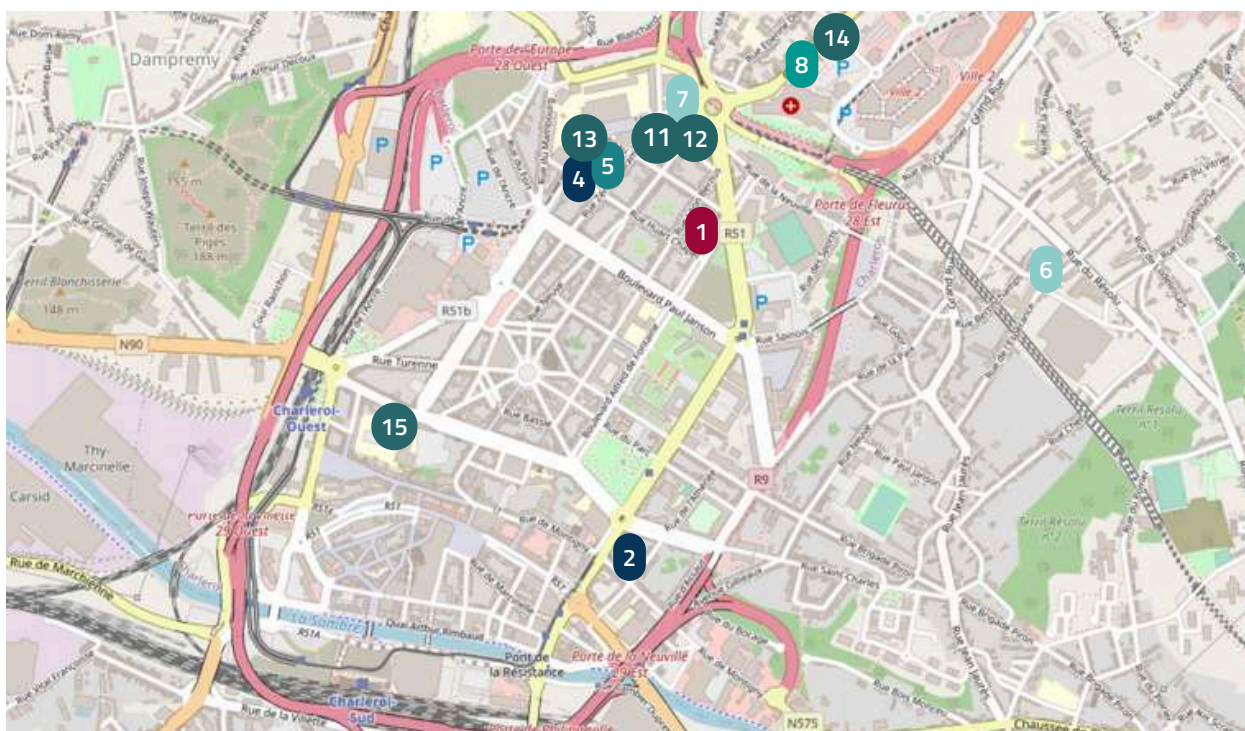
ULB UNIVERSITÉ
LIBRE
DE BRUXELLES

- 4 ULB, Charleroi-Ville Haute,**
Bât Z. Gramme
Boulevard E. Solvay 31 - 6000 Charleroi
Dep. of labour and social sciences - Master
in labour sciences

Haute Ecole provinciale de
Hainaut-Condorcet (HEPH-
Condorcet)

HAUTE ÉCOLE
CONDORCET

- 5 Boulevard Solvay, 31- 6000 Charleroi**
Department of Applied Arts
Department of Science and Technology
- 6 Rue de l'Espérance, 95**
- 6061 Montignies-sur-Sambre
Department of Motor Sciences
Department of Public Health
- 7 Square Hiernaux, 2 - 6000 Charleroi**
Department of Economic, Legal, and
Management Sciences
- 8 Rue de la Bruyère, 151 - 6001 Marcinelle**
Dépar Department of Education Sciences
Department of Communication, Education,
and Social Sciences



Haute Ecole Louvain en Hainaut (HELHa)

HELHa
Haute École Louvain en Hainaut

- 8 Grand'Rue, 185 - 6000 Charleroi
Technology and Engineering
- 9 Rue de l'Hôpital, 27 - 6060 Gilly
Nursing and Health Care
- 10 Rue Trieu Kaisin, 136
6061 Montignies-sur-Sambre
Business Studies, Social Studies, Nursing
and Health Care, Agronomy

Enseignement pour Adultes (EA)

eps
Enseignement
de Promotion Sociale

- 11 Institut Provincial Lise Thyry
Boulevard Hiernaux, 2 - 6000 Charleroi
- 12 Université du travail - Institut
d'Enseignement Technique Commercial
Square Hiernaux, 2 - 6000 Charleroi
- 13 Institut Supérieur Industriel de promotion
sociale
Boulevard Solvay, 31 - 6000 Charleroi
- 14 Collège Technique "Aumôniers du travail"
Grand'Rue, 185 - 6000 Charleroi
- 15 École de Promotion sociale Soralia (EPS
Soralia)
Avenue des Alliés, 2 - 6000 Charleroi
- 16 Centre d'Enseignement supérieur pour
adultes (CESA)
Rue de Courcelles, 10 - 6044 Roux

5. Coordonnées



Universités



Université de Mons (UMONS)

Head office

Place du Parc, 20 à 7000 Mons | +32 (0)65/37.31.11 | info.mons@umons.ac.be
www.umons.ac.be

In the Province of Hainaut

UMONS - Bâtiment Zénobe Gramme - Campus UCharleroi

Boulevard Solvay 31 à 6000 Charleroi | +32 (0)71/89.91.17
info.charleroi@umons.ac.be
<https://web.umons.ac.be/charleroi/>

UMONS, Site A6K/E6K

P910 – Square des martyrs à 6000 Charleroi
<https://web.umons.ac.be/charleroi/>



Université catholique de Louvain (UCLouvain)

Head office

Place de l'Université, 1 à 1348 Louvain-la-Neuve
www.uclouvain.be

In the Province of Hainaut

Campus FUCaM Mons

Chaussée de Binche, 151 à 7000 Mons | +32 (0)65/32.33.27 | info-mons@uclouvain.be
www.uclouvain.be/mons

Maison Georges Lemaître

Boulevard Devreux, 6 à 6000 Charleroi | +32 (0)71/20.25.00
info-charleroi@uclouvain.be
www.uclouvain.be/charleroi

Campus Tournai

Rue de Glategnies, 6 à 7500 Tournai | +32 (0)69/85.78.10 | info-tournai@uclouvain.be
www.uclouvain.be/tournai



Université libre de Bruxelles (ULB)

Head office

Avenue F. Roosevelt, 50 à 1050 Bruxelles
www.ulb.be

In the Province of Hainaut

ULB, Campus UCharleroi

Site A6K/E6K CP910 Square des martyrs à 6000 Charleroi | +32 (0)2/650.36.36 |
info.charleroi@ulb.ac.be
www.ulb.be/fr/l-universite/pole-ulb-charleroi

Hautes Écoles

(HE)



Haute École en Hainaut (HEH)

Head office

Rue Pierre-Joseph Duménil, 4 à 7000 Mons | +32 (0)65/34.79.83 | info@heh.be
www.heh.be



Haute École Louvain en Hainaut (HELHa)

Head office

Chaussée de Binche, 159 à 7000 Mons | +32 (0)65/40.41.42 | international@helha.be
www.helha.be



Haute École Provinciale de Hainaut-Condorcet (HEPH-Condorcet)

Head office

Digue de Cuesmes, 29 à 7000 Mons | +32 (0)65/40.12.20 | info@condorcet.be
www.condorcet.be

Écoles supérieures des Arts

(ESA)



ARTS² (Arts au carré)

Rue de Nimy, 7 à 7000 Mons | +32 (0)65/47.52.00 | info@artsaucarre.be
www.artsaucarre.be



Académie des Beaux-Arts de la Ville de Tournai (AC'T)

Rue de l'Hôpital Notre-Dame, 14 à 7500 Tournai | +32 (0)69/84.12.63 | contact@actournai.be
www.actournai.be

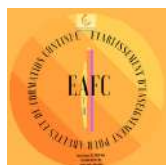


École Supérieure des Arts Saint-Luc Tournai (ESASLT)

Chaussée de Tournai, 7 à 7520 Tournai (Ramegnies-Chin) | +32 (0)69/25.03.66 | secretariat-esa@saintluctournai.be
www.stluc-sup-tournai.be

Établissements d'Enseignement pour Adultes

→ Réseau de la Fédération Wallonie-Bruxelles



Etablissement d'Enseignement pour Adultes et de Formation Continue (EAFC) d'Ath

Rue Carton, 5 à 7800 Ath | +32 (0)68/28.17.44 | eafc.ath@gmail.com
www.eafc-ath.com



Etablissement d'Enseignement pour Adultes et de Formation Continue (EAFC) des Hauts-Pays

Rue de Boussu, 84 à 7370 Dour | +32 (0)65/65.24.47 | info@eafc-hp.be
www.eafc-hp.be



Etablissement d'Enseignement pour Adultes et de Formation Continue (EAFC) de Frameries

Rue du Onze Novembre, 2 à 7080 Frameries | +32 (0)65/67.22.28 | info@clarofram.be
www.eafc-frameries.be



Etablissement d'Enseignement pour Adultes et de Formation Continue (EAFC) Jean Meunier

Avenue Roi Albert, 643 à 7012 Jemappes | +32 (0)65/88.15.00 | administration@eafcjeanmeunier.be
www.eafcjeanmeunier.be



Etablissement d'Enseignement pour Adultes et de Formation Continue (EAFC) de Morlanwelz-Mariemont

Rue Raoul Warocqué, 46 à 7140 Morlanwelz-Mariemont | +32 (0)64/44.97.54 | secretariat@eafcmlz.be
www.ineps-mlz.be



Etablissement d'Enseignement pour Adultes et de Formation Continue (EAFC) Mouscron Wallonie Picarde

Place de la Justice, 1 Bte 155 à 7700 Mouscron | +32 (0)56/84.23.72 | eafcmouscron@gmail.com
www.iepsm.be



Etablissement d'Enseignement pour Adultes et de Formation Continue (EAFC) de Péruwelz

Boulevard Léopold III, 40 à 7600 Péruwelz | +32 (0)69/77.10.35 | secretariat@eafcperuwelz.be
www.epsperuwelz.be



Etablissement d'Enseignement pour Adultes et de Formation Continue (EAFC) Tournai Eurométropole

Rue des Moulins, 4 à 7500 Tournai | +32 (0)69/22.48.41 | info@eafc-tournai.be
www.eafc-tournai.be



Etablissement d'Enseignement pour Adultes et de Formation Continue (EAFC) de Colfontaine-Jurbise

info@eafccj.be | www.eafccj.be
Colfontaine | Rue Clémenceau, 60-62 à 7340 Wasmes | +32 (0)65/67.26.88
Jurbise | Rue du Moustier, 3 à 7050 Jurbise | +32 (0)65/22.99.05

→ Réseau du Conseil des Pouvoirs Organisateurs de l'Enseignement Officiel Neutre Subventionné - CPEONS



Institut Provincial Lise Thiry

Square Jules Hiérnaux, 2 à 6000 Charleroi | +32 (0)71/55.23.06 | lise.thiry@hainaut-promsoc.be
www.etudierenhainaut.be/charleroi/LiseThiry



Institut Technique Commercial

Square Hiérnaux, 2 à 6000 Charleroi | +32 (0)71/53.17.56 | dimitri.leurquin@hainaut.be
www.etudierenhainaut.be/ietcps-charleroi



Institut Supérieur Industriel

Boulevard Solvay, 31 à 6000 Charleroi | +32 (0)71/53.17.57 | isips@hainaut.be
www.etudierenhainaut.be/isips-charleroi



Institut Provincial Supérieur Henri La Fontaine

Avenue du Tir, 10 à 7000 Mons | +32 (0)65/39.89.39 | info.iphlf@hainaut-promsoc.be
www.etudierenhainaut.be/institut-provincial-henri-la-fontaine



Institut Provincial des Arts et Métiers du Centre (IPAMC)

La Louvière

Rue Paul Pastur, 1 à 7100 La Louvière | +32 (0)64/22.22.80 | rosario.mongedona@hainaut-promsoc.be
www.etudierenhainaut.be/ipamc-lalouviere

Soignies

Rue de la Station, 57 à 7060 Soignies | +32 (0)67/34.02.52 | ita.soignies@hainaut.be
www.etudierenhainaut.be/ipamc-soignies

Ecaussinnes

Rue Ernest Martel, 6 à 7190 Ecaussinnes-D'Enghien | +32 (0)67/44.38.32 | secretariat.eice@hainaut.be
www.etudierenhainaut.be/ipamc-ecaussinnes



Institut Provincial Gabrielle Petit

Rue Paul Pastur, 2 à 7500 Tournai | +32 (0)69/25.37.32 | IPEPS.tournai@hainaut.be
www.etudierenhainaut.be/ipeps-wapi/

→ Réseau libre subventionné



Collège Technique "Aumôniers du travail"

Grand Rue, 185 à 6000 Charleroi | +32 (0)71/28.59.05 | secretariat@promsocatc.net
www.promsocatc.com



Arts et Métiers Enseignement Promotion Sociale (AMEPS)

Rue Sainte Thérèse, 47 à 6560 Erquelinnes | +32 (0)71/55.51.27 | info@ameps.be
www.ameps.be



Institut Reine Astrid de Mons (IRAM)

Chaussée de Binche, 159 à 7000 Mons | +32 (0)65/40.41.92 | info@iramps.be
www.iramps.be



Collège technique Saint-Henri

Avenue Royale, 50/B à 7700 Mouscron | +32 (0)56/85.57.00 | promsoc@sthenri.be
www.sainthenri-promsoc.be



Centre d'Enseignement Supérieur pour Adultes (CESA)

Rue de Courcelles, 10 à 6044 Roux | +32 (0)71/45.11.08 | cesa@cesa.be
www.cesa.be



École Soralia

Avenue des Alliés, 2 à 6000 Charleroi | +32 (0)71/50.78.23 | infos.secretariat@ecole-soralia-charleroi.be
<https://ecole-soralia-charleroi.be/>



Enseignement de Promotion Sociale d'Enghien (EPSE)

Rue du Village, 50 à 7850 Marcq (Enghien) | +32 (0)2/395.60.23 | info@epse.be
www.epse.be



UMONS
Université de Mons

UCLouvain

ULB UNIVERSITÉ
LIBRE
DE BRUXELLES

HEH^{be}
Haute École en Hainaut

HELHa
Haute École Louvain en Hainaut

**HAUTE ÉCOLE
CONDORCET**

ARTS2
ÉCOLE SUPÉRIEURE DES ARTS
ACADEMY OF ARTS

ACT ESA ACADEMIE
BEAUX-ARTS
TOURNAI

st!uc
ESA Tournai

eps
Enseignement
de Promotion Sociale